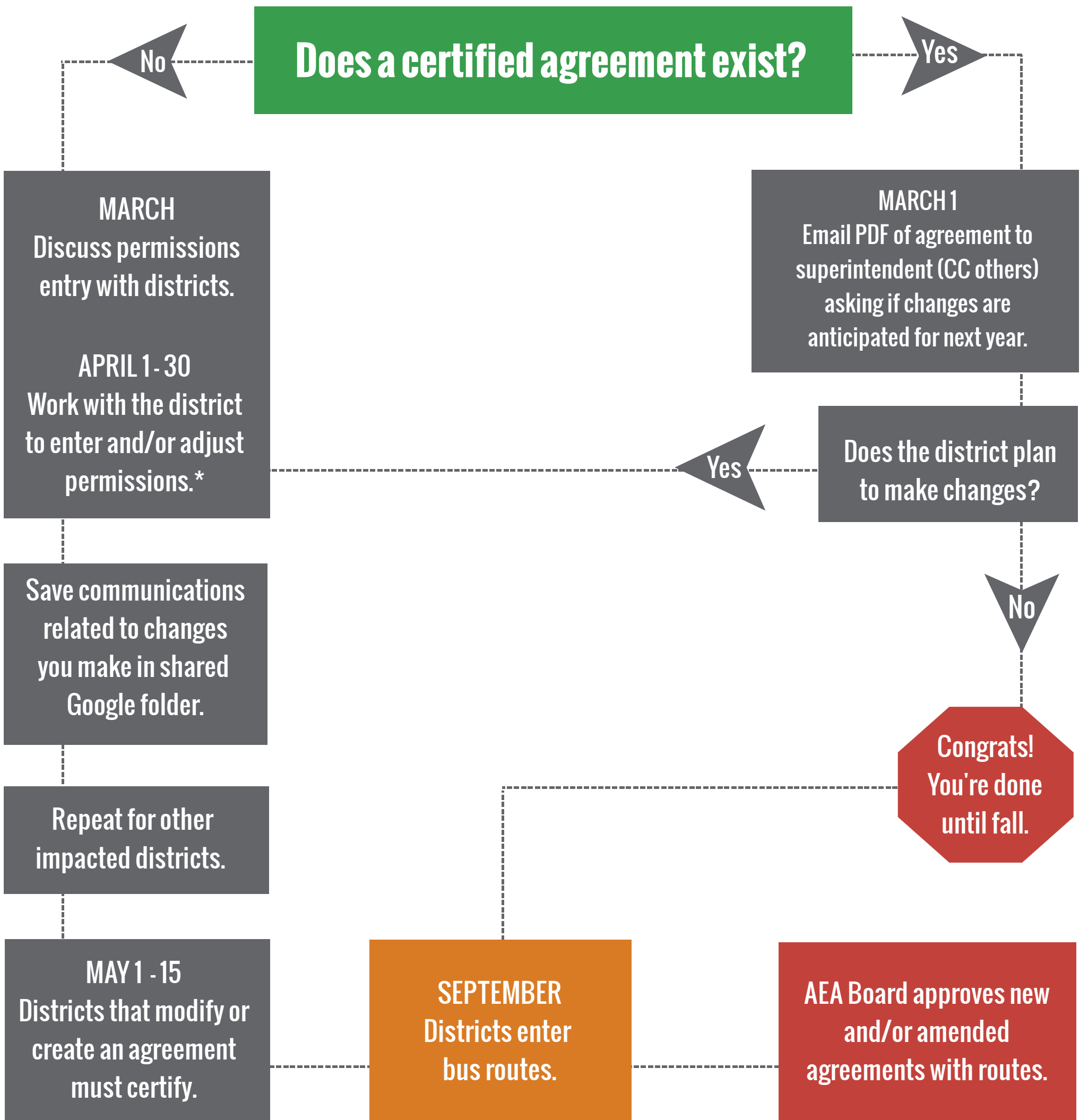




INTER-DISTRICT TRANSPORTATION



*Permissions entry may be completed by the "super-user" OR by district staff. This is at the discretion of each AEA. Contact Andy Pape (apape@aea1.k12.ia.us) to open permissions entry for district staff in your AEA during the months of March and April. Be sure to communicate any changes impacting a district in a neighboring AEA with that AEA's board secretary.